


# driade

## TOTTORI *by Kateryna Sokolova*



## CAMPIONARIO TESSUTI-PELLI/ *FABRIC-LEATHER SAMPLES*

 **N.B.:** From June 25, 2021, all upholstered seating furniture imported or sold in the United States must comply with the flammability test specified by California Technical Bulletin 117-2013 (aka "SOFFA"). This solution is compatible only with fabrics and/or materials that contains a minimum of 75% of natural fibers. The following are the only fabrics suitable among those in our current range: Barcellona, Cairo, Cipro outdoor, Delhi, Lisbona, Santorini outdoor.

CAT.A

700 COTONE BONIFACIO - COTTON BONIFACIO

Composizione/Composition: 100% CO Altezza/Height:138/140 cm. Peso/Weight: 560gr. Abrasione/Abrasion: 20.000 Martindale (uso pubblico, uso regolare/public use, regular use).  
BS5852:0 1979 ign cigarette test pass.



002  
BIANCO  
WHITE



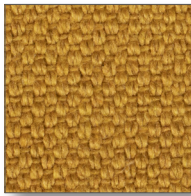
004  
AVORIO  
IVORY



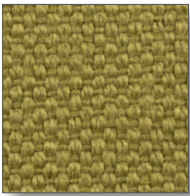
016  
TORTORA  
TAUPE



080  
MARRONE CHIARO  
LIGHT BROWN



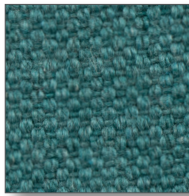
019  
OCRA  
OCHRE



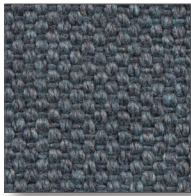
062  
VERDE CHIARO  
LIGHT GREEN



066  
VERDE SCURO  
DARK GREEN



H03  
VERDE ACQUA  
TEAL



061  
AZZURRO INDACO  
INDIGO BLUE



024  
ROSA  
PINK



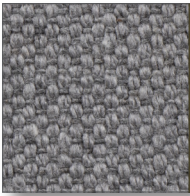
039  
ROSSO  
RED



040  
BORDEAUX  
BURGUNDY



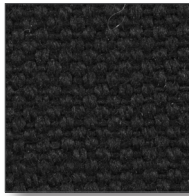
072  
BLU  
BLUE



045  
GRIGIO CHIARO  
LIGHT GREY



050  
GRIGIO SCURO  
DARK GREY



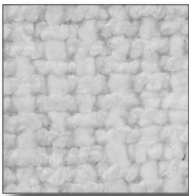
091  
NERO  
BLACK

I colori sono indicativi. Non è possibile garantire uniformità di tono nella tintura dei lotti di tessuto. Resta inteso che lievi differenze di colore verranno accettate al momento dell'ordine.  
The colors are just indicative. Actually a steady tone of lots cannot be guaranteed. It remains understood that any slight colour difference will be accepted in case an order is placed.

CAT.A

701 POLIESTERE MARSIGLIA - *POLYESTER MARSIGLIA*

Composizione/Composition: 100% PL. Altezza/Height: 140 cm. Peso/Weight: 840gr. Abrasione/Abrasion: 80.000 Martindale (uso pubblico, uso molto intensivo/ *public use, very intensive use*. Idrorepellente, irrestringibile/*Water repellent, unbreakable*.



002  
BIANCO  
*WHITE*



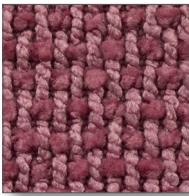
004  
AVORIO  
*IVORY*



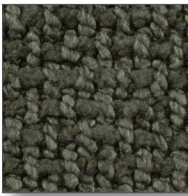
016  
TORTORA  
*TAUPE*



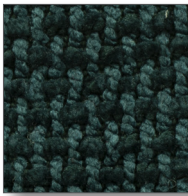
018  
GIALLO CHIARO  
*LIGHT YELLOW*



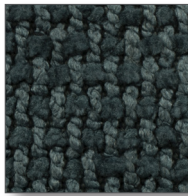
024  
ROSA  
*PINK*



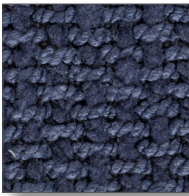
063  
VERDE  
*GREEN*



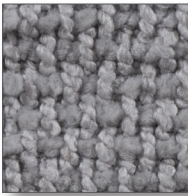
066  
VERDE SCURO  
*DARK GREEN*



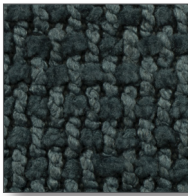
069  
PETROLIO  
*PETROL GREEN*



072  
BLU  
*BLUE*



045  
GRIGIO CHIARO  
*LIGHT GREY*



050  
GRIGIO SCURO  
*DARK GREY*

I colori sono indicativi. Non è possibile garantire uniformità di tono nella tintura dei lotti di tessuto. Resta inteso che lievi differenze di colore verranno accettate al momento dell'ordine.  
*The colors are just indicative. Actually a steady tone of lots cannot be guaranteed. It remains understood that any slight colour difference will be accepted in case an order is placed.*

CAT.A

702 MISTO COTONE PETRA - COTTON MIX PETRA

Composizione/Composition: 50% CO riciclato/recycled CO, 35% PL, 15% PC. Altezza/Height: 140 cm. Peso/Weight: 490gr. Abrasione/Abrasion: 20.000 Martindale (uso pubblico, uso regolare/ public use, regular use). Antigoccia, idrorepellente/Anti-drip, water repellent.



002  
BIANCO  
WHITE



011  
SABBIA  
SAND



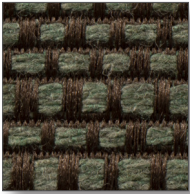
016  
TORTORA  
TAUPE



H18  
ORO  
GOLD



040  
BORDEAUX  
BURGUNDY



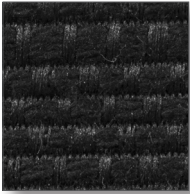
063  
VERDE  
GREEN



085  
TESTA DI MORO  
DARK BROWN



072  
BLU  
BLUE



091  
NERO  
BLACK

I colori sono indicativi. Non è possibile garantire uniformità di tono nella tintura dei lotti di tessuto. Resta inteso che lievi differenze di colore verranno accettate al momento dell'ordine.  
The colors are just indicative. Actually a steady tone of lots cannot be guaranteed. It remains understood that any slight colour difference will be accepted in case an order is placed.



CAT.A

703 MISTO COTONE DAMASCO - COTTON MIX DAMASCO

Composizione/Composition: 50% CO riciclato/recycled CO, 35% PL, 15% PC. Altezza/Height: 140 cm. Peso/Weight: 590gr. Abrasione/Abrasion: 24.000 Martindale (uso pubblico, uso regolare/public use, regular use). Antigoccia, idrorepellente/Anti-drip, water repellent.



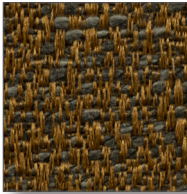
002  
BIANCO  
WHITE



011  
SABBIA  
SAND



016  
TORTORA  
TAUPE



H18  
ORO  
GOLD



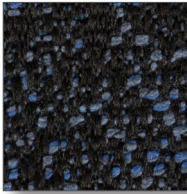
040  
BORDEAUX  
BURGUNDY



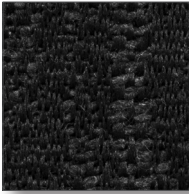
063  
VERDE  
GREEN



085  
TESTA DI MORO  
DARK BROWN



072  
BLU  
BLUE



091  
NERO  
BLACK

I colori sono indicativi. Non è possibile garantire uniformità di tono nella tintura dei lotti di tessuto. Resta inteso che lievi differenze di colore verranno accettate al momento dell'ordine.  
The colors are just indicative. Actually a steady tone of lots cannot be guaranteed. It remains understood that any slight colour difference will be accepted in case an order is placed.

CAT.B

704 MISTO POLIESTERE BERLINO - *POLYESTER MIX BERLINO*

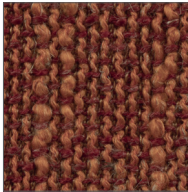
Composizione/Composition: 68% PL, 20% CO, 12% LI. Altezza/Height: 140 cm. Peso/Weight: 670gr. Abrasione/Abrasion: 65.000 Martindale (uso pubblico, uso molto intensivo/public use, very intensive use). BS5852, Antigoccia, idrorepellente/Anti-drip, water repellent.



004  
AVORIO  
IVORY



011  
SABBIA  
SAND



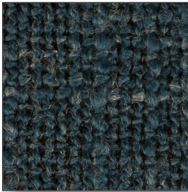
033  
ARANCIO  
ORANGE



H03  
VERDE ACQUA  
AQUA GREEN



063  
VERDE  
GREEN



070  
BLU CHIARO  
LIGHT BLUE



050  
GRIGIO SCURO  
DARK GREY

I colori sono indicativi. Non è possibile garantire uniformità di tono nella tintura dei lotti di tessuto. Resta inteso che lievi differenze di colore verranno accettate al momento dell'ordine.  
*The colors are just indicative. Actually a steady tone of lots cannot be guaranteed. It remains understood that any slight colour difference will be accepted in case an order is placed.*

CAT.B

705 POLIESTERE JAKARTA - *POLYESTER JAKARTA*

Composizione/*Composition*: 100% PL riciclato biodegradabile/*PL recycled biodegradable*. Altezza/*Height*: 140 cm. Peso/*Weight*: 800gr. Abrasione/*Abrasion*: 100.000 Martindale (uso pubblico, uso molto intensivo/*public use, very intensive use*).



004  
AVORIO  
*IVORY*



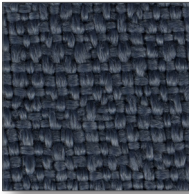
016  
TORTORA  
*TAUPE*



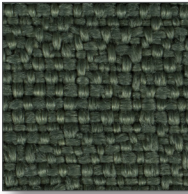
033  
ARANCIO  
*ORANGE*



040  
BORDEAUX  
*BURGUNDY*



070  
BLU CHIARO  
*LIGHT BLUE*



066  
VERDE SCURO  
*DARK GREEN*



083  
MARRONE SCURO  
*DARK BROWN*



041  
GRIGIO GHIACCIO  
*ICE GREY*



060  
GRIGIO SCURO  
*DARK GREY*

I colori sono indicativi. Non è possibile garantire uniformità di tono nella tintura dei lotti di tessuto. Resta inteso che lievi differenze di colore verranno accettate al momento dell'ordine.  
*The colors are just indicative. Actually a steady tone of lots cannot be guaranteed. It remains understood that any slight colour difference will be accepted in case an order is placed.*

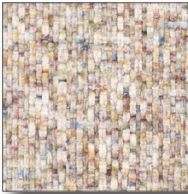
CAT.B

706 POLIESTERE GINEVRA - *POLYESTER GINEVRA*

Composizione/Composition: 100% PL. Altezza/Height: 140 cm. Peso/Weight: 460gr. Abrasione/Abrasion: 25.000 Martindale (uso pubblico, uso regolare/public use, regular use).



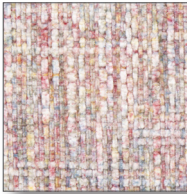
004  
AVORIO  
*IVORY*



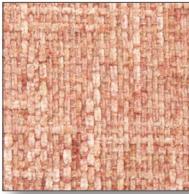
011  
SABBIA  
*SAND*



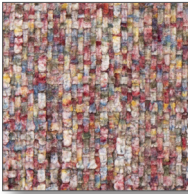
016  
TORTORA  
*TAUPE*



H19  
ROSA CHIARO  
*LIGHT PINK*



H20  
ROSA SCURO  
*DARK PINK*



040  
BORDEAUX  
*BURGUNDY*



060  
AZZURRO  
*LIGHT BLUE*



069  
PETROLIO  
*PETROL GREEN*



071  
BLU MEDIO  
*MEDIUM BLUE*



073  
BLU SCURO  
*DARK BLUE*

I colori sono indicativi. Non è possibile garantire uniformità di tono nella tintura dei lotti di tessuto. Resta inteso che lievi differenze di colore verranno accettate al momento dell'ordine.  
*The colors are just indicative. Actually a steady tone of lots cannot be guaranteed. It remains understood that any slight colour difference will be accepted in case an order is placed.*



CAT.C

036 MISTO LINO LISBONA - LINEN MIX LISBONA

Composizione/Composition: 72% LI, 14% CO,14% VI . Altezza/Height: 140 cm. Peso/Weight: 735gr. Abrasione/Abrasion: 25.000 Martindale (uso pubblico, uso regolare/public use, regular use).



002  
BIANCO  
WHITE



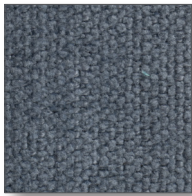
011  
SABBIA  
SAND



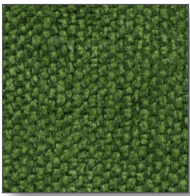
078  
NOCCIOLA  
HAZEL



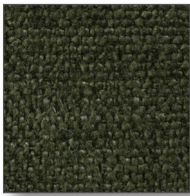
039  
ROSSO  
RED



060  
AZZURRO  
LIGHT BLUE



062  
VERDE CHIARO  
LIGHT GREEN



066  
VERDE SCURO  
DARK GREEN



072  
BLU  
BLUE



069  
PETROLIO  
PETROL GREEN



045  
GRIGIO CHIARO  
LIGHT GREY



050  
GRIGIO SCURO  
DARK GREY



091  
NERO  
BLACK

I colori sono indicativi. Non è possibile garantire uniformità di tono nella tintura dei lotti di tessuto. Resta inteso che lievi differenze di colore verranno accettate al momento dell'ordine.  
The colors are just indicative. Actually a steady tone of lots cannot be guaranteed. It remains understood that any slight colour difference will be accepted in case an order is placed.

CAT.C

709 POLIPROPILENE AMBURGO - *POLYPROPYLENE AMBURGO*

Composizione/*Composition*: 100% PP. Altezza/*Height*: 140 cm. Peso/*Weight*: 1050 gr. Abrasione/*Abrasion*: 40.000 Martindale (uso pubblico, uso molto intensivo/*public use, very intensive use*). CAL117, BS5852 Cigaret test



002  
BIANCO  
*WHITE*



011  
SABBIA  
*SAND*



045  
GRIGIO CHIARO  
*LIGHT GREY*



073  
BLU SCURO  
*DARK BLUE*



057  
ANTRACITE  
*ANTHRACITE GREY*

I colori sono indicativi. Non è possibile garantire uniformità di tono nella tintura dei lotti di tessuto. Resta inteso che lievi differenze di colore verranno accettate al momento dell'ordine.  
*The colors are just indicative. Actually a steady tone of lots cannot be guaranteed. It remains understood that any slight colour difference will be accepted in case an order is placed.*

CAT.C

710 MISTO POLIESTERE BERNA - *MIXED POLYESTER BERNA*

Composizione/*Composition*: 29% PL, 29% PC, 21% CO, 15% WO, 6% VI. Altezza/*Height*: 140 cm. Peso/*Weight*: 820gr. Abrasione/*Abrasion*: 40.000 Martindale (uso pubblico, uso molto intensivo/*public use, very intensive use*). CAL117, BS5852 Cigaret test



002  
BIANCO  
*WHITE*



011  
SABBIA  
*SAND*



045  
GRIGIO CHIARO  
*LIGHT GREY*



091  
NERO  
*BLACK*

I colori sono indicativi. Non è possibile garantire uniformità di tono nella tintura dei lotti di tessuto. Resta inteso che lievi differenze di colore verranno accettate al momento dell'ordine.  
*The colors are just indicative. Actually a steady tone of lots cannot be guaranteed. It remains understood that any slight colour difference will be accepted in case an order is placed.*

CAT.C

040 LINO BARCELLONA - *LINEN BARCELLONA*

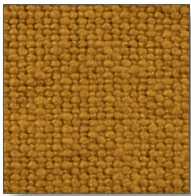
Composizione/Composition: 100% L.I. Altezza/Height: 138/140 cm. Peso/Weight: 680gr. Abrasione/Abrasion: 30.000 Martindale (uso pubblico, uso intensivo/*public use, intensive use*).  
BS5852:0 1979 ign cigarette test pass



004  
AVORIO  
*IVORY*



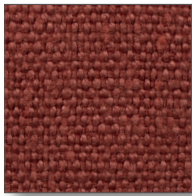
011  
SABBIA  
*SAND*



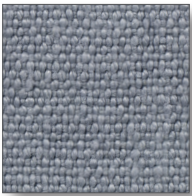
020  
GIALLO SENAPE  
*MUSTARD YELLOW*



024  
ROSA  
*PINK*



036  
ROSSO ANTICO  
*ANTIQUE RED*



060  
AZZURRO  
*LIGHT BLUE*



072  
BLU  
*BLUE*



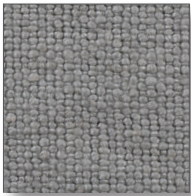
066  
VERDE SCURO  
*DARK GREEN*



080  
MARRONE CHIARO  
*LIGHT BROWN*



083  
MARRONE SCURO  
*DARK BROWN*



045  
GRIGIO CHIARO  
*LIGHT GREY*



050  
GRIGIO SCURO  
*DARK GREY*

I colori sono indicativi. Non è possibile garantire uniformità di tono nella tintura dei lotti di tessuto. Resta inteso che lievi differenze di colore verranno accettate al momento dell'ordine.

*The colors are just indicative. Actually a steady tone of lots cannot be guaranteed. It remains understood that any slight colour difference will be accepted in case an order is placed.*



CAT.D

712 MISTO LANA MALMÖ - *WOOL MIX MALMÖ*

Composizione/*Composition*: 32% CO, 61% VW, 7% PA. Altezza/*Height*: 140 cm. Peso/*Weight*: 1200gr. Abrasione/*Abrasion*: 25.000 Martindale (uso pubblico, uso regolare/*public use, regular use*).



002  
BIANCO  
*WHITE*



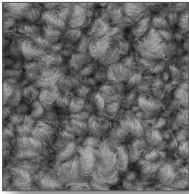
011  
SABBIA  
*SAND*



069  
PETROLIO  
*PETROL GREEN*



072  
BLU  
*BLUE*



045  
GRIGIO CHIARO  
*LIGHT GREY*



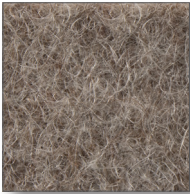
050  
GRIGIO SCURO  
*DARK GREY*

I colori sono indicativi. Non è possibile garantire uniformità di tono nella tintura dei lotti di tessuto. Resta inteso che lievi differenze di colore verranno accettate al momento dell'ordine.  
*The colors are just indicative. Actually a steady tone of lots cannot be guaranteed. It remains understood that any slight colour difference will be accepted in case an order is placed.*

CATE

713 LANA DIVINA (KVADRAT) - WOOL DIVINA (KVADRAT)

Composizione/Composition: 100% VW. Altezza/Height: 150 cm. Peso/Weight: 840gr. Abrasione/Abrasion: 45.000 Martindale (uso pubblico, uso molto intensivo/public use, very intensive use), CAL117, crib5IMOFTP,UNI9175 1IM



011  
SABBIA  
SAND



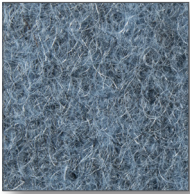
021  
GIALLO  
YELLOW



024  
ROSA  
PINK



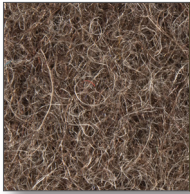
039  
ROSSO  
RED



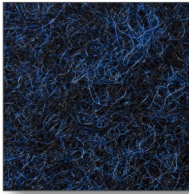
060  
AZZURRO  
LIGHT BLUE



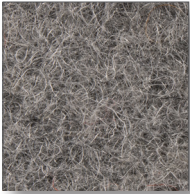
066  
VERDE SCURO  
DARK GREEN



081  
MARRONE  
BROWN



073  
BLU SCURO  
DARK BLUE



045  
GRIGIO CHIARO  
LIGHT GREY



091  
NERO  
BLACK

I colori sono indicativi. Non è possibile garantire uniformità di tono nella tintura dei lotti di tessuto. Resta inteso che lievi differenze di colore verranno accettate al momento dell'ordine.  
The colors are just indicative. Actually a steady tone of lots cannot be guaranteed. It remains understood that any slight colour difference will be accepted in case an order is placed.

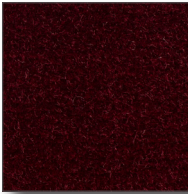
CAT.E

714 COTONE VENEZIA - *COTTON VENEZIA*

Composizione/*Composition*: 100% CO. Altezza/*Height*: 140 cm. Peso/*Weight*: 1200gr. Abrasione/*Abrasion*: 50.000 Martindale, CAL TB117 (uso pubblico, uso molto intensivo/*public use, very intensive use*).



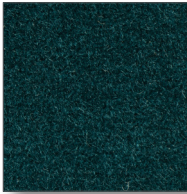
002  
BIANCO  
*WHITE*



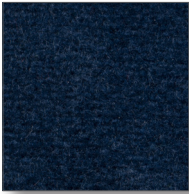
040  
BORDEAUX  
*BURGUNDY*



062  
VERDE CHIARO  
*LIGHT GREEN*



066  
VERDE SCURO  
*DARK GREEN*



073  
BLU SCURO  
*DARK BLUE*



050  
GRIGIO SCURO  
*DARK GREY*

I colori sono indicativi. Non è possibile garantire uniformità di tono nella tintura dei lotti di tessuto. Resta inteso che lievi differenze di colore verranno accettate al momento dell'ordine.  
*The colors are just indicative. Actually a steady tone of lots cannot be guaranteed. It remains understood that any slight colour difference will be accepted in case an order is placed.*

CAT.O

049 PELLE RIO - *LEATHER RIO*

Chrome tanning, bovine of European origin, lightly buffed natural grain, pigmented and protective coat, with a soft, waxy feel and semi-matt appearance. Thickness: 0.9/1.1 mm  
PULIRE SOLO CON PANNINO UMIDO E DETERGENTE NEUTRO/CLEAN ONLY WITH A DAMP CLOTH AND A NEUTRAL DETERGENT



002  
BIANCO  
*WHITE*



E22  
LATTE  
*MILK*



004  
AVORIO  
*IVORY*



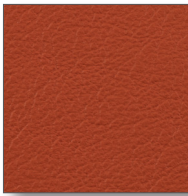
011  
SABBIA  
*SAND*



016  
TORTORA  
*TAUPE*



021  
GIALLO  
*YELLOW*



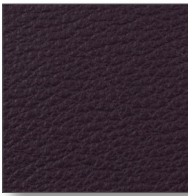
033  
ARANCIO  
*ORANGE*



039  
ROSSO  
*RED*



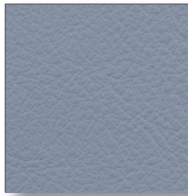
040  
BORDEAUX  
*BURGUNDY*



E23  
PRUGNA  
*PLUM*



066  
VERDE SCURO  
*DARK GREEN*



060  
AZZURRO  
*LIGHT BLUE*



072  
BLU  
*BLUE*



E20  
BLU NOTTE  
*DARK BLUE*



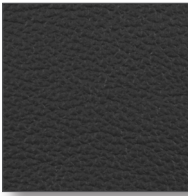
080  
MARRONE CHIARO  
*LIGHT BROWN*



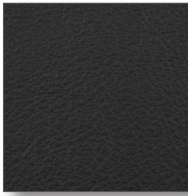
083  
MARRONE SCURO  
*DARK BROWN*



044  
GRIGIO  
*GREY*



050  
GRIGIO SCURO  
*DARK GREY*



091  
NERO  
*BLACK*

I colori sono indicativi. Non è possibile garantire uniformità di tono nella tintura dei lotti di tessuto. Resta inteso che lievi differenze di colore verranno accettate al momento dell'ordine.  
*The colors are just indicative. Actually a steady tone of lots cannot be guaranteed. It remains understood that any slight colour difference will be accepted in case an order is placed.*



CAT.ZC

051 PELLE CHURCHILL - *LEATHER CHURCHILL*

Chrome tanning, bull hides with european origin, aniline - full grain, through dyeing aniline. Thickness: 1.0/1.2 mm

PULIRE SOLO CON PANNINO UMIDO E DETERGENTE NEUTRO/CLEAN ONLY WITH A DAMP CLOTH AND A NEUTRAL DETERGENT



003  
POLVERE  
*DUSTY*



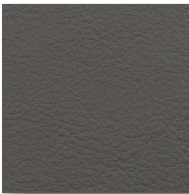
084  
CUOIO  
*LEATHER*



081  
MARRONE  
*BROWN*



085  
TESTA DI MORO  
*DARK BROWN*



045  
GRIGIO CHIARO  
*LIGHT GREY*



057  
ANTRACITE  
*ANTHRACITE*

I colori sono indicativi. Non è possibile garantire uniformità di tono nella tintura dei lotti di tessuto. Resta inteso che lievi differenze di colore verranno accettate al momento dell'ordine.

*The colors are just indicative. Actually a steady tone of lots cannot be guaranteed. It remains understood that any slight colour difference will be accepted in case an order is placed.*

CAT.ZME

052 PELLE AMUR - *LEATHER AMUR*

Through dyed , bovine of European origin, with a distressed vintage effect, this high quality article is obtained starting with nubuck leather, which is slightly levelled with aniline and hand rubbed to give an aged effect. Thickness: 0.9/1.1 mm

PULIRE SOLO CON PANNINO UMIDO E DETERGENTE NEUTRO/*CLEAN ONLY WITH A DAMP CLOTH AND A NEUTRAL DETERGENT*



011  
SABBIA  
*SAND*



016  
TORTORA  
*TAUPE*



024  
ROSA  
*PINK*



090  
AVANA  
*HAVANA*



083  
MARRONE SCURO  
*DARK BROWN*



045  
GRIGIO CHIARO  
*LIGHT GREY*



057  
ANTRACITE  
*ANTHRACITE*

I colori sono indicativi. Non è possibile garantire uniformità di tono nella tintura dei lotti di tessuto. Resta inteso che lievi differenze di colore verranno accettate al momento dell'ordine.






*The colors are just indicative. Actually a steady tone of lots cannot be guaranteed. It remains understood that any slight colour difference will be accepted in case an order is placed.*

CAT.ZA

054 PELLE PURUS - LEATHER PURUS

Chrome tanning,aniline dyed, semi aniline full grain,European bovine hide. Thickness: 1.0/1.2 mm

PULIRE SOLO CON PANNINO UMIDO E DETERGENTE NEUTRO/CLEAN ONLY WITH A DAMP CLOTH AND A NEUTRAL DETERGENT

	002 BIANCO WHITE		004 AVORIO IVORY		152 NUDE CARNATION		016 TORTORA TAUPE
	033 ARANCIO ORANGE		039 ROSSO RED		040 BORDEAUX BURGUNDY		073 BLU SCURO DARK BLUE
	084 CUOIO LEATHER		E24 COGNAC COGNAC		083 MARRONE SCURO DARK BROWN		045 GRIGIO CHIARO LIGHT GREY
	050 GRIGIO SCURO DARK GREY		091 NERO BLACK				

I colori sono indicativi. Non è possibile garantire uniformità di tono nella tintura dei lotti di tessuto. Resta inteso che lievi differenze di colore verranno accettate al momento dell'ordine.  
The colors are just indicative. Actually a steady tone of lots cannot be guaranteed. It remains understood that any slight colour difference will be accepted in case an order is placed.

